

Peace and quiet on the Avenue

Price : LEASED

3 2 2

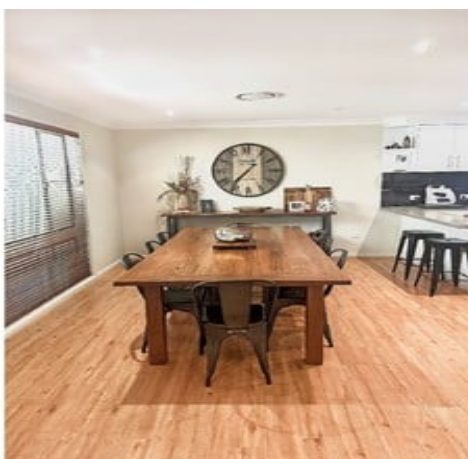
- Three bedrooms all with robes and the main offering an ensuite
- Lounge with wood heating, this area flowing onto the dining and kitchen areas of the home.
- Recently renovated kitchen with six burner gas cook top, electric oven, dishwasher, pantry and breakfast bar
- Timber plank flooring in the living, dining, kitchen and though the generous hallway of the home,
- Double peaked carport at the front of the home with easy access to the front tiled porch and entry to the home
- Work shed with roller door approximately 6mt x 5mt with cement flooring, power, lined ceiling and a storage shed at the back, plus a smaller shed to house the mower, tools etc.

Inspection by appointment only

Tenancy Application

<http://www.schutebell.com.au/property-management>

This information has been obtained from our vendors and third parties. We make no representations to its accuracy. All computer images, maps and photographs are indicative only. We are merely passing the information on. Interested parties should make their own enquiries.



Representative
Kerry Klintworth

Property ID 7550837

Schute Bell
Property



Sydney Office
Ph: (02) 9892 0700
www.schutebell.com.au