

Excellent Family Home

Price : SOLD

4 🏠 2 🚗 5 🚗



Offered to the market today is an excellent family home set on a generous block measuring 2077 sq mt, located in a new estate on the Northern side of town and being close to sporting ovals, schools and the Macquarie River.

This home offers four bedrooms all with robes the main offering a walk-in robe and ensuite

Formal lounge room at the front of the home and a study nook.

An open plan living, dining and kitchen area the kitchen features a dishwasher, breakfast bar, wall oven, hotplates, rangehood and along with a gas point and wood heating all these areas having tiled flooring. From this area you can walk through glass sliding door to a well-appointed entertainment area, with stencil crete floor and peaked span line roofing.

Main bathroom with bath, shower, vanity and a separate toilet.

Double lockup garage attached to the home with two roller doors.

Other features of this home include:

Ducted evaporative cooling

Alarm system

Vertical blinds throughout the home

Tiled floor in the entry and hallway

Chicken run, various fruit trees

Wood storage shed.

Four bay shed with one end being enclosed all with cement flooring

Enough room to install a pool or just a great size family yard.

Fully enclosed yard, with double gate access to the back yard

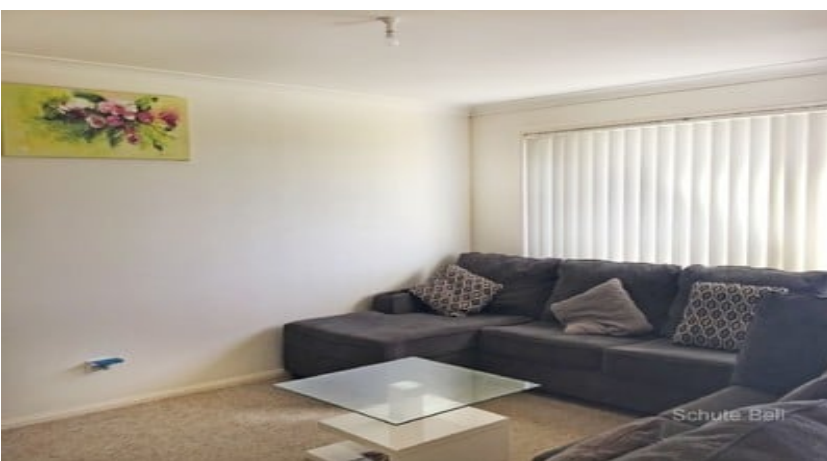
Stencil crete driveway.



If you are looking for a great-sized family home, then this home must be on your inspection list.

Inspection by appointment only.

This information has been obtained from our vendor(s) and third parties. We make no representations to its accuracy. All computer images, maps and photographs are indicative only. We are merely passing the information on. Interested parties should make their own enquiries.



Representative
Kerry Klintworth

Property ID 7548559

Schute Bell
Property



Sydney Office
Ph: (02) 9892 0700
www.schutebell.com.au