

## Spacious family home with fruit trees

Price : SOLD

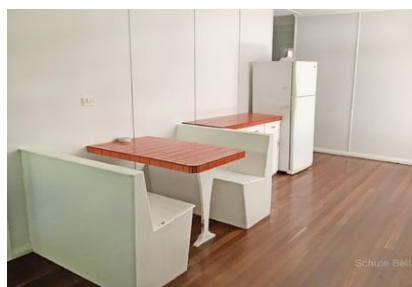
4 🏠 2 🚗 2 🚗

Spacious, solid family home constructed from Hardi plank on cement stumps. This home has good bones with options for renovation to improve on investment. Featuring 4 bedrooms, 2 with built-ins, the 4th bedroom could be used as a second living area. 2 bathrooms one with external access, polished hardwood timber flooring, retro kitchen and freshly painted. Set on 1012 sqm block with fruit trees including Mango, Lemon/Lime, Peach and a Macadamia. Ample trellis for grapes and passion fruit.

- 2 new split system air
- BBQ area
- Small garden shed
- 2 bay carport with electric roller door
- Cement driveway
- Expected rental \$310 pw

Inspection by appointment only.

This information has been obtained from our vendor(s) and third parties. We make no representations to its accuracy. All computer images, maps and photographs are indicative only. We are merely passing the information on. Interested parties should make their own enquiries.



Representative  
Paul Grams

Property ID 6940055

Schute Bell  
Property



Sydney Office  
Ph: (02) 9892 0700  
www.schutebell.com.au