

Centrally located with lots of potential

Price : SOLD

2 🏠 1 🚗 1 🚗

Don't let the outside of the house trick you, when you enter the house you will be pleasantly surprised on how much has already been done to this house, and with the low asking price and central location you should not go past this one!

The carpeted lounge room is situated at the front of the house, it has a large reverse cycle air-conditioner. The lounge room flows through to the vinyl floored kitchen, which has a 4 burner stove and older style cupboards.

The two bedrooms are both carpeted, large built in wardrobes, and the first bedroom has a ceiling fan.

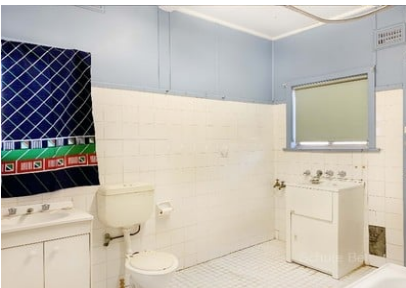
The bathroom is located at the rear of the building and has a shower over the top of a large bath, toilet, and white vanity as well. The laundry is built in to this area as well, with a stainless steel wash basin.

The tidy yard offers a great low maintenance design, the yard has two 2000L rain water tanks connected to the house, securely fenced and a lockable shed at the rear of the yard approx 4 metres x 6 metres in size.

This house offers a low asking price and is able to move in straight away, with minimal work you could make this into your own little home.

Inspection by appointment only

This information has been obtained from our vendors and third parties. We make no representations to its accuracy. All computer images, maps and photographs are indicative only. We are merely passing the information on. Interested parties should make their own enquiries.



Representative

Property ID 5304599

Schute Bell
Property



Sydney Office
Ph: (02) 9892 0700
www.schutebell.com.au