

# . Road View Narromine, NSW

## Iconic Farming Property

Price : **SOLD**

4  1  0 



Area & Tenure:  
3,095 Acres, 1,252 Hectares

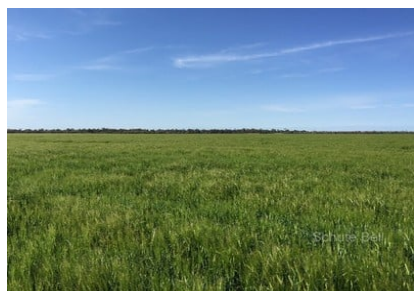
Situation:  
22 kms South, South West of Narromine.

Description:  
90% Arable, self-mulching grey to medium red soils. The boundary fenced with hinge joint 90% new, balance good condition. Well watered by 10 Dams, 5 Meg Narromine Irrigation stock and domestic filtered water. Average annual rainfall of 22 inches.

Improvements:  
Large Colonial four bedroom homestead formal and informal living areas, office and entertaining area.  
- Workman's cottage complex  
- Three bay car shed  
- 60' x 40' lockable workshop  
- Open front shed 60' x 60' 1 Bay lockable with concrete floor  
- 3,000 tonne grain storage  
- Steel sheep yards

Features:  
- 3,095 acre, 1,252 Hectares  
- 22 Years of crop rotation  
- Beautiful Colonial Four bedroom Homestead  
- 3,000 Tonne grain storage  
- All weather Bitumen road to front door  
- 20 Km south of Narromine  
- School bus to the front gate  
- A 'QUALITY PLUS' PROPERTY

This information has been obtained from our vendor(s) and third parties. We make no representations to its accuracy. All computer images, maps and photographs are indicative only. We are merely passing the information on. Interested parties should make their own enquiries.



Representative  
Jason Hartin

Property ID 3906298

**Schute Bell**  
Property



Sydney Office  
Ph: (02) 9892 0700  
[www.schutebell.com.au](http://www.schutebell.com.au)