

## More Than Meets the Eye

Price : **SOLD**

3 🏠 1 🚗 1 🚗

Presenting a spacious three-bedroom vinyl clad home set in a great location and priced to sell.

This home has plenty of extra space with the added bonus of two sleep-outs to complement the three good sized carpeted bedrooms. The main bedroom is above average in size with a split system and the extravagance of a huge walk-in wardrobe.

The functional and appealing kitchen contains a 4 burner electric hotplate and stove, breakfast bar and dishwasher. There is a charming sunny dining room and comfortable large lounge room with free standing wood heater. The home is cooled with evaporative air conditioning and ceiling fans.

The bathroom features a spa bath as well as shower, and vanity; with separate toilet.

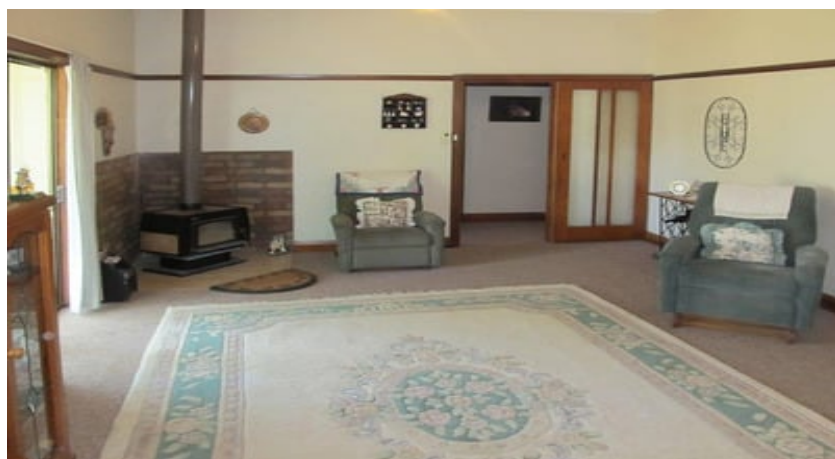
The rear of the house sees a covered entertainment area, garden shed, rainwater tank, secure fencing and rear lane access. Also a single car carport at the front.

This house is well worth an inspection and the extra closed in sleep-out areas present the opportunity for more living space, office or sleeping areas, dependent on your needs and ideas.

This property could be tenanted for around \$200/week.

Inspection by appointment only.

This information has been obtained from our vendor(s) and third parties. We make no representations to its accuracy. All computer images, maps and photographs are indicative only. We are merely passing the information on. Interested parties should make their own enquiries.



Representative

Property ID 2941510

Schute Bell Property



Sydney Office  
Ph: (02) 9892 0700  
www.schutebell.com.au